

FROM ALPHA TO OMEGA



**'Life in all its fullness'**

(JOHN 10:10)



Weekly newsletter  
Friday 2<sup>nd</sup> February 2024

Dear parents and carers,

We've had a great and very busy week here at Emmanuel! Trips and visits played a huge part of our week, plus lots of exciting learning and interesting discussions.

### **Children's Mental Health Week: 5th-9th February**

Next week, we will be marking Place2Be's Children's Mental Health Week with special lessons with every class from our school ELSA, Mrs Watkins and the Wellbeing Champions. The theme 'My voice matters' will focus on how we can empower our children to have a positive impact on their health and wellbeing by ensuring that they feel heard and that what they say makes a difference. On the flip side of that, we are also reminding the children of the importance of their role in listening to others and their responsibility in ensuring their friends' voices are heard too. Please do talk to your children about what they have been learning. We have also attached in this newsletter some information from Place2Be to help with conversations at home.



### **Year 3 Sharing Assembly**

Well done to the children in Year 3 for their class assembly on the Tudors this week. Thank you too to parents and carers for organising the cake sale, which raised £185, with all the proceeds going to the Year 3 class.

### **Year 3 Trip to the Thames**

Year 3 had such an exciting trip today! They went to see Shakespeare's Globe and learned about entertainment in Tudor times. They then discovered more about how the Thames would have been used throughout history. Next, they went to the banks of the Thames to look for artefacts from Tudor times, and found remnants from Tudor pottery such as from plates and vases. The children also found objects from Roman times and the Victorian times.

### **Pupil and Parent Acceptable Use Policies**

This week you were sent a pupil and a parent 'Acceptable Use Policy'. Please can you read and sign that you agree to the policies via Parent Hub.

### **Remaining Sharing Assemblies**

There will be cake sales after all the remaining class assemblies with all the proceeds going directly to the class. Please bring some change on the dates below! Thank you in advance to parents and carers for organising these. Year 6 will also be having a cake sale this term, and we will keep you posted on when it will be!

Year 4 - Wednesday 7<sup>th</sup> February: 2.30pm-3pm  
Year 1 - Wednesday 28<sup>th</sup> February: 2.30pm-3pm  
Year 2 - Wednesday 6<sup>th</sup> March: 2.30pm-3pm  
Year 5 Easter play - Wednesday 27<sup>th</sup> March: 10am-11am  
Reception Open Classroom – Tuesday 19<sup>th</sup> March 9.15am

### Sharing our Emmanuel School Mental Health and Wellbeing Strategy

Mental Health and Wellbeing (MHW) has been a key priority at Emmanuel for many years, where we strive to promote positive mental health across our whole school community: for our staff and governors, parents and pupils, and partner organisations beyond the school gates. In June, we shared our aim to achieve the Wellbeing Award for Schools (WAS) accreditation. One of the key outcomes has been to create a school MHW strategy to create a formal framework for the many fantastic things we already do to support MHW in our school whilst providing transparency as to the systems and processes in place to ensure MHW is embedded in the day to day organisation of our school. To read the strategy document, you can download it on the Pupil Wellbeing page of our website:

<https://www.emmanuel.camden.sch.uk/page/?title=Pupil+Wellbeing&pid=53>

On Thursday 8<sup>th</sup> February at 2.30pm, Mrs Watkins, our School Emotional Literacy and Mental Health Lead who has been leading on this programme, will be sharing further detail about the MHW strategy and answer any questions that our parents and carers may have. All parents and carers are welcome to join this.

Wishing you a lovely weekend,

Miss Roscoe and the Emmanuel Team



### Attendance

Our school target for attendance is 96%. This week, well done to Year 6!

Class	Attendance
Nursery	90%
Reception	94%
Year 1	97.6%
Year 2	97.1%
Year 3	96.4%
Year 4	96.6%
Year 5	95.5%
Year 6	98%
School	95.9%



## [Diary Dates](#) – click here for our school calendar

05/02/24	0:00am – 11:00pm Children's mental health week <a href="#">New Calendar</a>	9:00am – 12:00pm Year 5 Swimming <a href="#">New Calendar</a>		
06/02/24	0:00am – 11:00pm Children's mental health week <a href="#">New Calendar</a>	9:00am – 12:00pm Year 5 Swimming <a href="#">New Calendar</a>		
07/02/24	All Day Primary Maths Challenge <a href="#">New Calendar</a>	0:00am – 11:00pm Children's mental health week <a href="#">New Calendar</a>	9:00am – 12:00pm Year 5 Swimming <a href="#">New Calendar</a>	2:30pm – 3:00pm Year4 Sharing Assembly <a href="#">New Calendar</a>
08/02/24	0:00am – 11:00pm Children's mental health week <a href="#">New Calendar</a>	9:00am – 12:00pm Year 5 Swimming <a href="#">New Calendar</a>	9:50am – 11:30am Year 1 Trip <a href="#">New Calendar</a>	11:00am – 11:30am Year 3 Trip <a href="#">New Calendar</a>
09/02/24	0:00am – 11:00pm Children's mental health week <a href="#">New Calendar</a>	9:00am – 12:00pm Year 5 Swimming <a href="#">New Calendar</a>		
12/02/24	9:00am – 3:00pm Half Term <a href="#">New Calendar</a>			

### **A note from Reverend Trin:**

The school worship reps, Ms Hammett and I had a great trip to St Paul's Cathedral this week for the London Diocesan Board for Schools annual service. Our two banner carriers did a brilliant job in the procession carrying the Emmanuel banner. At the school Mass on Monday we'll be hearing from the worship reps about their experiences.

With half term nearly upon us, we're gearing up for Pancake Day and Ash Wednesday, to mark the beginning of Lent and our 40 journey towards Easter. You and your families are very welcome to join us at church for a pancake party on Tuesday afternoon and for Mass with the imposition of ashes at 12:30 and 19:30 on Wednesday 14 February. From the week after half term we'll be starting our Lent Groups at Emmanuel. Whether or not you are regular member of the congregation you are very welcome to join us for these five discussion sessions where we'll be looking at the Gospel of Mark and considering how it speaks to us in our current context. He's got a lot to say that might just be relevant!

Our groups will meet at the following times and days:

Sundays 9:00-10:00 with coffee and croissants

Mondays 20:00 on zoom

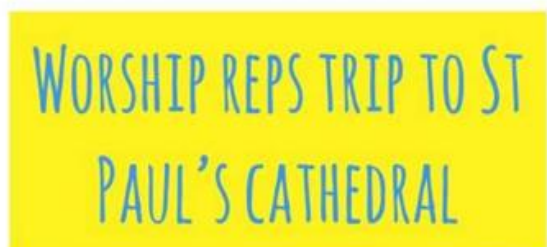
Wednesdays 13:00-13:45 with lunch

If you'd like to learn more do email me or grab me at the school gate.

Thanks a lot, have good weekends!

Best,

Reverend Trin



## Year 3 Assembly







## YEAR 3 TRIP TO THE RIVER THAMES



PIC•COLLAGE

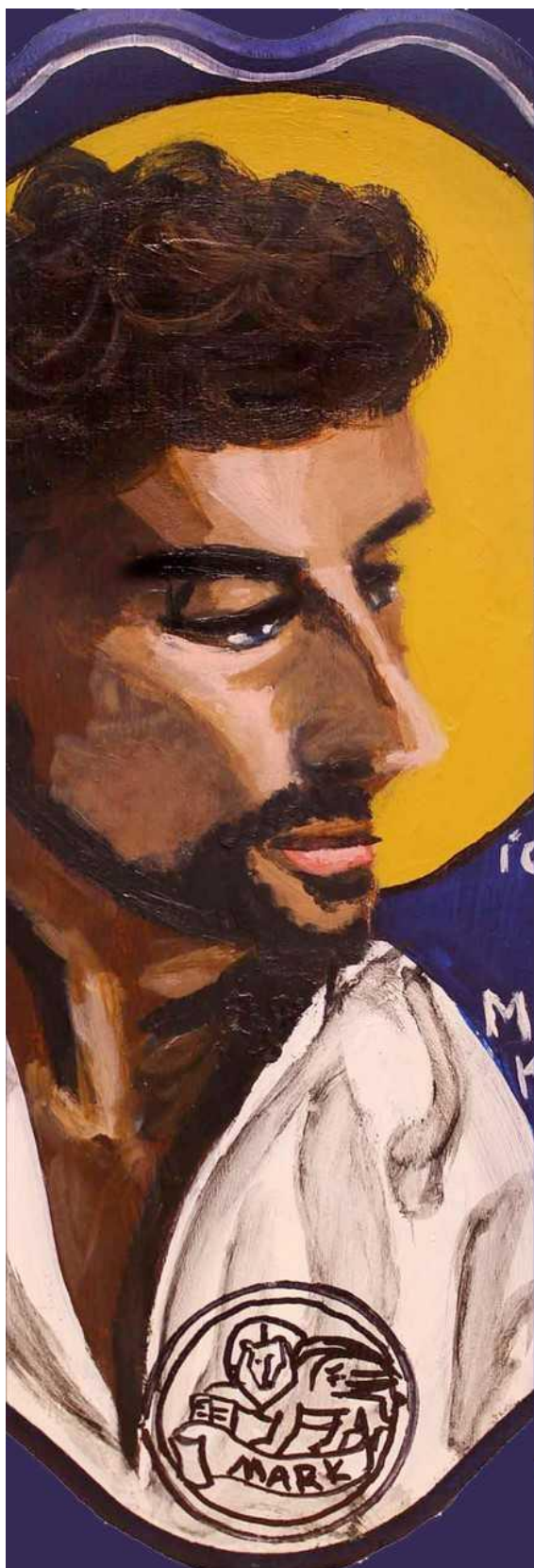


## School visionaries

Congratulations to these children for showing our school vision and values this week:  
**From Alpha to Omega - life in all its fullness. (John 10:10)**

Diego and Riyad in Nursery  
Keana and Mahdi in Reception  
Rotimi and Hugo in Year 1  
Freja and Leon L in Year 2  
Kim and Dhilan in Year 3  
Ryan and Labeeba in Year 4  
Maggie and Shayan in Year 5  
Georgia and Alicia in Year 6





# Meeting God in Mark

Lent Reading Groups  
at Emmanuel

Starting 19th February

Join us as we journey through  
Mark's Gospel this Lent,  
using Rowan Williams's  
wonderful book:  
Meeting God in Mark.

**Mondays 8-9pm**  
by zoom

**Wednesdays 1-2pm**

Darke Room with lunch

**Sundays 9-10am**

David's Deli with breakfast

All are welcome at any group.  
To get hold of a copy of the book,  
please contact Revd Trin:  
[vicar@emmanuelnw6.com](mailto:vicar@emmanuelnw6.com)

For more info: [www.emmanuelnw6.com](http://www.emmanuelnw6.com)

image: Gracie Morbitzer



Emmanuel Church West Hampstead

# Ash Wednesday

*Let us come to the Lord who is full of compassion,  
and acknowledge our transgressions in penitence and faith*

14 February 2024

12:30pm Said Mass &  
Imposition of Ashes

7:00pm Sung Mass &  
Imposition of Ashes

For more info: [www.emmanuelnw6.com](http://www.emmanuelnw6.com)

# Half-term Children's Workshops

Get creative this February half-term holiday with our fun family workshops. From sculpture to animation, there is something for everyone.



## **WEARABLE SCULPTURE**

**Tuesday 13 February**

Create your own wearable sculptures and brooches out of tin, jewels and found objects.

## **SPIDER ANIMATION - featuring BSL Interpretation**

**Wednesday 14 February**

Make an animation with wire spiders inspired by Louise Bourgeois' sculptures.

## **WINTER LANTERNS**

**Thursday 15 February**

Create your own winter lantern and decorate it with silhouette scenes from your childhood.

## **CREEPY CRAWLY PRINTMAKING**

**Friday 16 February**

Experiment with a variety of fun printmaking methods and create your own works of art.

Workshops run 11am-1pm & 2-4pm.

£3 per child & accompanying adult

Free tickets available: see website for conditions

For enquiries call 020 7841 3595 or email us at [learning@foundlingmuseum.org.uk](mailto:learning@foundlingmuseum.org.uk)

Book your place at [foundlingmuseum.org.uk](http://foundlingmuseum.org.uk)